

GEBERIT URINAL ACTUATORS

Single-Flush Actuators for Urinals

SPECIFICATIONS

Actuators for concealed urinal carrier system. Actuator flush plates shall be glass, zinc die-cast, molded plastic or fabricated stainless steel and plated to guard against scratches. All components shall be compliant with applicable codes and product standards.

FEATURES

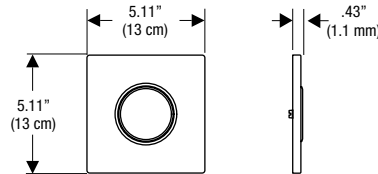
- Designed to maintain appearance push after push
- Moving parts are accessible behind actuator flush plate
- Made of molded plastic or stainless steel and plated
- Available in five designer finishes
- Initiates flush of 0.5 GPF (1.9 LPF) when used with Geberit Duofix carrier for urinals
- Includes mounting plate and hardware

Complies with:

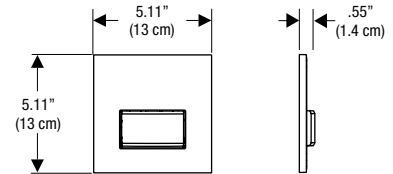
- ASSE 1037
- CSA B125.3

DIMENSIONS

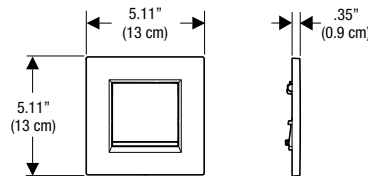
Type 10 Single-Flush Actuator Plate



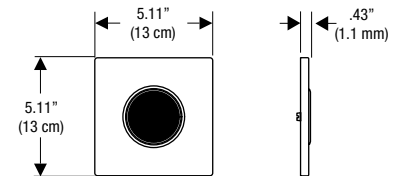
Type 50 Single-Flush Actuator Plate



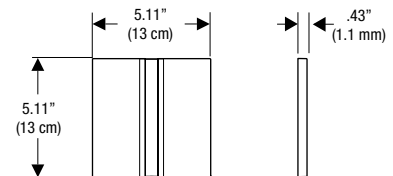
Type 30 Single-Flush Actuator Plate



Type 10 Hands Free Actuator Plate



Type 50 Hands Free Actuator Plate



WARRANTY

- One-year limited warranty on manual flush plates
- Brushed Stainless Steel flush plate finish: 5 years (residential); One year: public
- Electronic components: 2 years from installation

NOTE:

Not intended to be sold in California.

Products marked with comply with the American Disabilities Act (ADA) when installed per the requirements of the latest ADA Accessibility Guidelines (ADAAG) and/or ICC/ANSI A117.1.



Actuators

Style	Material	Finish	Model No.
	Zinc	Customer supplied inlay	116.016.00.5
		Alpine White	116.016.11.5
		Black	116.016.DW.5
		Brushed Chrome	116.016.GH.5
	Glass	Umber	116.016.SQ.5

	Stainless	Brushed Stainless Steel	116.015.SN.1
--	-----------	-------------------------	--------------

	Plastic	Polished Chrome-Matte Chrome-Polished Chrome***	116.017.KH.1
		White-Polished Chrome-White***	116.017.KJ.1

Hands-Free Actuators

	Stainless	Brushed Stainless Steel (Battery/DC Power)	116.035.SN.1
		Brushed Stainless Steel (AC Power – CLASS 2 power supply transformer included)	116.025.SN.1

*** Finishes follow this pattern = Plate-Trim-Button



Geberit
2100 S. Clearwater Drive
Des Plaines, IL 60018
USA

P 847-803-7777
F 847-849-1845

www.geberit.us

ARCHITECT/ENGINEER APPROVAL

Job Name: _____

Date: _____ Quantity: _____

Model Specified: _____

Variations Specified: _____

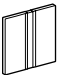
Customer/Wholesaler: _____

Contractor: _____

Architect: _____

GEBERIT URINAL ACTUATORS

Single-Flush Actuators for Urinals

Style	Material	Finish	Model No.
Type 50 	Zinc NEW!	Chrome-Brushed** (AC Power – CLASS 2 power supply transformer included)	116.026.GH.1
		Red Gold-Brushed** (AC Power – CLASS 2 power supply transformer included)	116.026.QB.1
		Black Chrome-Brushed** (AC Power – CLASS 2 power supply transformer included)	116.026.QD.1
		Brass-Brushed** (AC Power – CLASS 2 power supply transformer included)	116.026.QF.1
	Chrome-Brushed** (Battery/DC Power)	116.036.GH.1	
	Red Gold-Brushed** (Battery/DC Power)	116.036.QB.1	
	Black Chrome-Brushed** (Battery/DC Power)	116.036.QD.1	
	Brass-Brushed** (Battery/DC Power)	116.036.QF.1	

Remote Programming Accessory for Hands-Free Actuators



"Service Handy" remote programming device for Geberit touch-free devices 115.860.00.1

** Finishes follow this pattern = Frame-Button

*** Finishes follow this pattern = Plate-Trim-Button

GEBERIT URINAL ACTUATORS

Single-Flush Actuators for Urinals

HANDS-FREE APPLICATION

- For automatic "hands free" sensing and flush actuation in hygienic or ADA compliant applications
- For public or residential spaces
- For new installations or retrofit to existing Geberit Duofix 111.625 urinal frame installs
- For low consumption urinal .05 GPF (1.9LPF) flush volume)

HANDS-FREE SPECIFICATIONS

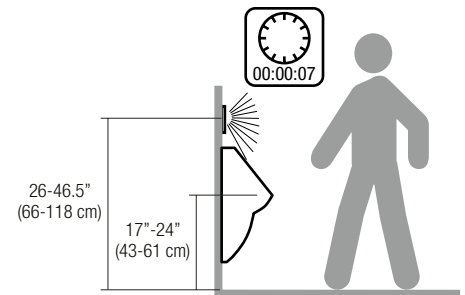
- Stainless steel - Brushed stainless steel
- Detection distance: 4 - 20 in (10 - 50 cm)
- Flush time: 3 - 15 s (default time 4 s); can be manually adjusted
- Automatic hygiene flush: 24 h after last flush cycle
- Operating voltage: 3 V DC / Power input < 0.5 W
- Battery lifetime*: Lithium – 2 years Alkaline – 1.5 years
- User detection time: 7 s
- Flow rate at 15 psi (1 bar): 3.8 gpm (0.24 l/s) as supplied 4.7 gpm (0.3 l/s) without flow limiter
- Humidity < 100 % relative
- Operating pressure range: 14 - 116 psi (1 - 8 bar)
- Max. fluid temp: 86°F (30°C)

HANDS-FREE SCOPE OF SUPPLY

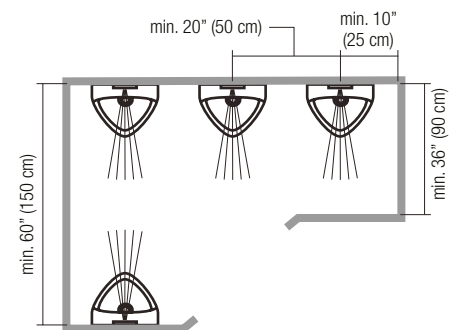
- Cover plate with infrared window (replaceable), and with securing bar
- Infrared control, premounted on fixation frame
- Solenoid valve
- Fastening material
- Battery box and 2x "AA" lithium batteries*
- 120 V 60 Hz or 230 V 50 Hz Class 2 Power supply included**

HANDS-FREE FEATURES

- Proven infrared triangulation detection method with background fade-out and auto-calibration to environment
- Latching solenoid valve with chloramine resistant EPDM diaphragm and protected by dual-stage filters
- "Low battery" warning (2-stage: flashing LED when battery starts to go low; continuous red light when cannot flush)*
- Dynamic flushing time reduction during periods of high traffic to reduce water consumption
- Vandal resistant stainless steel cover plate and independent sensor electronics to prevent tampering
- Pre-installed electrical connectors with cross-polarity protection (one-way connection)
- Tool-free maintenance, with access to battery box and flush valve behind the actuator plate
- Battery change can be performed without turning off water*
- Mounting frame overlaps wall by 5/8" (15 mm) to protect against water infiltration
- Standard dummy flush tube allows pipes to be flushed clean prior to installation of flush valve, lengthening valve life



With urinal flush controls a minimum distance of 36" (90 cm) to the opposite wall must be observed to ensure problem-free detection. If urinal flush controls are mounted on opposite walls, a distance of 60" (150 cm) must be observed. Urinal flush controls mounted next to one another must be at least 20" (50 cm) apart.



Installing highly reflective surfaces (such as mirrors) in the immediate vicinity of the urinal flush control should be avoided, as these can lead to incorrect releases and malfunctions.

Geberit product is ADA compliant when fixture and actuator are installed at proper heights

Geberit
2100 S. Clearwater Drive
Des Plaines, IL 60018
USA

P 847-803-7777
F 847-849-1845

www.geberit.us