

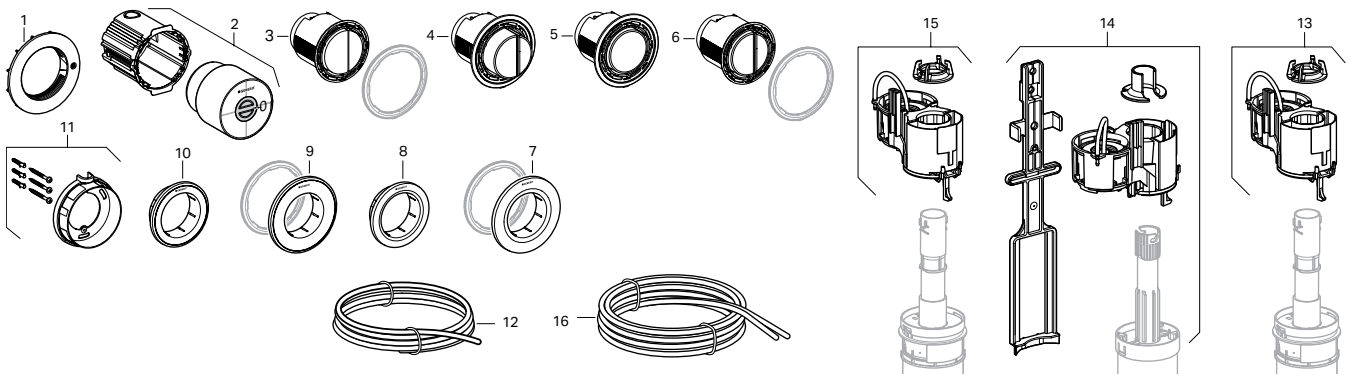
Geberit Type 01 and Type 10 Remote Push Button Actuators


116.040 116.041 116.042 116.043 116.044 116.045 116.050 116.055 116.056 116.057



Actuator Dimensions: Type 01 and Type 10
 Concealed Installation: 3.7" (9.4 cm) dia.
 Furniture Installation: 3.94" (10 cm) dia.

Item	Model No.	Description	List Price
	1	1	242.939.00.1 Nut remote control for furniture \$16.00
2	2	2	243.130.00.1 Concealed housing w/ protection cover 19.00
	3	3	243.398.KH.1 Actuator protruding Type 10 dual flush Matte Chrome 136.00
	3	3	243.398.KK.1 Actuator protruding Type 10 dual flush Alpine White 120.00
	4	4	243.396.11.1 Actuator protruding Type 01 dual flush Polished Chrome/White 92.00
5	5		243.395.11.1 Actuator Type 01 pneumatic single flush, Alpine White 84.00
5	5		243.395.21.1 Actuator Type 01 pneumatic single flush, Bright Chrome 92.00
	6	6	243.397.11.1 Actuator Type 01 pneumatic dual flush, Alpine White 92.00
	6	6	243.397.21.1 Actuator Type 01 pneumatic dual flush, Bright Chrome 120.00
	6	6	243.397.46.1 Actuator Type 01 pneumatic dual flush, Matte Chrome 120.00
7	7	7	242.961.11.1 Collar for Type 01 for concealed actuator, Alpine White 28.00
7	7	7	242.961.21.1 Collar for Type 01 for concealed actuator, Bright Chrome 28.00
	8	8	242.962.11.1 Collar for Type 01 furniture actuator, Alpine White 16.00
	8	8	242.962.21.1 Collar for Type 01 furniture actuator, Bright Chrome 28.00
	8	8	242.962.46.1 Collar for Type 01 furniture actuator, Matte Chrome 28.00
	9	9	242.963.KH.1 Collar for Type 10 for concealed actuator, Matte Chrome 35.00
	9	9	242.963.KJ.1 Collar for Type 10 for concealed actuator, Polished Chrome/White 35.00
	10	10	242.964.KH.1 Collar for Type 10 furniture actuator, Matte Chrome 35.00
	10	10	242.964.KJ.1 Collar for Type 10 furniture actuator, Polished Chrome/White 35.00
11	11		242.965.00.1 Fastening ring for Type 01 S/M actuator 32.00
12	12		256.000.00.1 Pneumatic hose 3.5m 5.00
13			240.573.00.1 Pneumatic flushing device for WC-control single flush 19.00
	14	14	242.594.00.1 Pneumatic flushing device dual for UP720/UP172 35.00
	15	15	240.574.00.1 Pneumatic flushing device for WC-control dual flush 24.00
	16	16	240.575.00.1 Double pneumatic hose for dual flush 2m (Blue/Clear) 6.00



Products marked with  comply with the American Disabilities Act (ADA) when installed per the requirements of the latest ADA Accessibility Guidelines (ADAAG) and/or ICC/ANSI A117.1.