

ENHANCING STYLE AND COMFORT

# ACCESSIBLE DESIGN

DESIGN  
MEETS  
FUNCTION



# DESIGN FOR ALL

Whether the toilet compartment is intended for ambulatory or wheelchair occupants, home or public spaces, specifying a Geberit in-wall tank and carrier system combined with a wall-hung toilet bowl is safer and more accessible. Geberit makes it easier for anyone to live a bit more independently.

## Wall-Hung Convenience



### CLEANING

Easy to clean the entire floor with a mop. No bending or kneeling.



### SAVES SPACE

Takes up less space than a standard toilet for greater flexibility, safety, and comfort in the smallest spaces.



### EASY TO MAINTAIN

The Geberit valve eliminates problematic chains and flappers that corrode and fail. Working parts are easily accessed through the stylish flush and cover plates.

Eliminating the tank on the toilet allows greater mobility in the compartment and reduces the potential for injury.

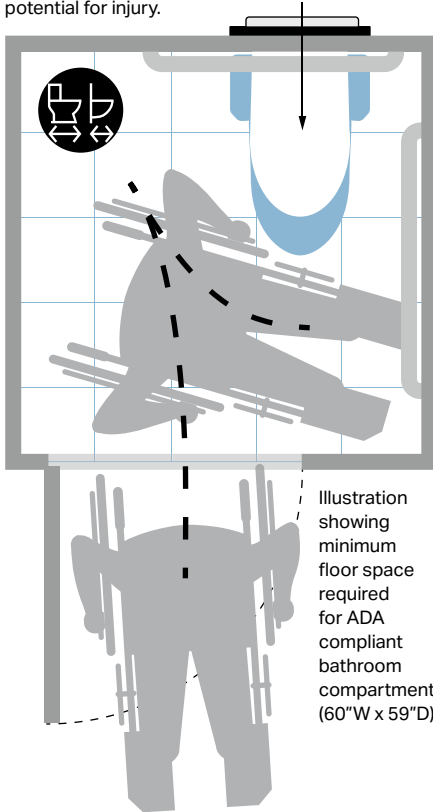


Illustration showing minimum floor space required for ADA compliant bathroom compartment (60\"/>

## Carrier Frame Basics



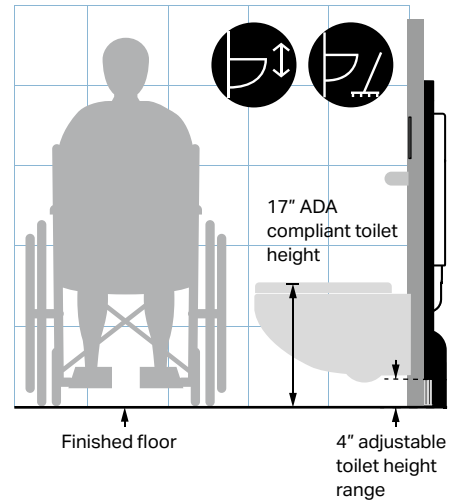
### FLEXIBILITY IS STANDARD

The system fits in 2x4 or 2x6 walls. Adjustable height allows the Geberit system to easily accommodate the toilet seat height from 15 inches (380 mm) minimum to 19 inches (485 mm) to meet personal preference or local ADA guidelines including ANSI A117.1.



### MAXIMUM SUPPORT

The rugged steel frame of the in-wall system is capable of supporting up to 880 pounds (400 kg), exceeding ASME A112.6.2 strength requirements.



## Tank and Valves



### INSULATED TANK

The impact-resistant high-density tank is guaranteed against leaks and insulated to prevent condensation.



### WATER SAVING DUAL-FLUSH

Dual-flush volumes of 1.6/0.8 GPF (6/3 LPF) or 1.28/0.8 GPF (4.8/3 LPF) exceed high efficiency toilet standards. You can even qualify for EPA WaterSense rebates or green building points.



The fill and flush valves and supply stop are located behind the wall. If maintenance is required, all working parts are easily accessed through the flush plate or cover plate.



## Actuators

Geberit offers a variety of flush control designs with electronic or pneumatic actuation that meet ADA guidelines for activation. With multiple styles and finish options, remote controls can be placed for left- or right-handed activation anywhere within 5.5 ft. (1.6 m) of the concealed tank to complement your specific design requirements.

### REMOTE CONVENIENCE

The pneumatic components of the Geberit Type 01 and Rectangle remote actuators have been tested for years of stress. Air pressure transmits force from the flush control to the flush valve. Geberit cover plates complement the remote flush, providing easy access to working parts of the system.



Type 01



Rectangle



Type 70

### A TOUCH MORE REFINED

A gentle touch is all it takes to activate the Geberit Type 70 remote actuator. No electrical current is required.

### A TOUCH-FREE FLUSH

Our Geberit Sigma10 and Sigma80 hands-free flush controls use an electronic sensor to activate the flush.



Sigma10



Sigma80



## Learn more: videos and reference guides available online



**In-wall system 111.335.00.5 for 2x6**  
<https://www.youtube.com/watch?v=Lp6aeoHPkcY>



**Type 70 (Concealed)**  
<https://www.youtube.com/watch?v=UuDxpRR42fo&t=5s>



**Rectangle**  
<https://www.youtube.com/watch?v=fp5viSXmhV8>



**In-wall system 111.798.00.1 for 2x4**  
[https://www.youtube.com/watch?v=RDBvww\\_TuXI](https://www.youtube.com/watch?v=RDBvww_TuXI)



**Type 10 (Concealed)**  
<https://www.youtube.com/watch?v=84xupX-DNuE>



**Geberit ADA Whitepaper**  
[http://www.geberitnorthamerica.com/media/local\\_media/\\_imported/brochures/GNA7204.pdf](http://www.geberitnorthamerica.com/media/local_media/_imported/brochures/GNA7204.pdf)



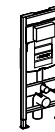
**Sigma80**  
<https://www.geberitnorthamerica.com/technical-pages-en/#videoid=FQerYw7JkQP2Ny8z6939WN>



**Type 10 (Furniture)**  
<https://www.youtube.com/watch?v=wMmui7D1vQ8>



**Accessible Products Guide**  
<http://productguide.wpengine.com/>



Style	Power	Flush	Material	Finish	111.335.00.5 111.902.00.5	111.798.00.1 111.597.00.1	111.012.00.1 111.018.00.1
<b>Hands-free Actuators</b>							
Sigma10	AC		Plastic	Pol Chr/Mat Chr	115.907.KH.1	—	
				Wht/Pol Chr	115.907.KJ.1		
				Wht/Gold	115.907.KK.1		
				Wht/Mat Chr	115.907.KL.1		
				Blk/Pol Chr	115.907.KM.1		
	Mat Chr/Pol Chr	115.907.KN.1					
	Battery	Dual	Plastic	Br SS/Pol SS	115.907.SN.1	115.856.SN.1 <sup>†</sup>	
				Br SS/Pol SS	115.890.SN.5 <sup>†</sup>		
				Pol Chr/Mat Chr	115.908.KH.1		
				Wht/Pol Chr	115.908.KJ.1		
Wht/Gold				115.908.KK.1			
Metal	Plastic	Wht/Mat Chr	115.908.KL.1	—			
		Blk/Pol Chr	115.908.KM.1				
		Mat Chr/Pol Chr	115.908.KN.1				
		Br SS/Pol SS	115.908.SN.1				
		Br SS/Pol SS	115.891.SN.5 <sup>†</sup>				
Sigma80	AC		Glass	Black Glass	116.090.SG.1	116.092.SG.1	
				Mirror Glass	116.090.SM.1	116.092.SM.1	
<b>Accessories for Hands-free Actuators</b>							
Connection cable (optional) length 78–3/4" (2 m)					242.658.00.1*	—	
Extension mains cable, length 78–3/4" (2 m)					241.831.00.1*	—	
Transformer for AC powered hands-free actuator					115.861.00.1**	—	
<b>Dual-Flush Buttons for Concealed Installations</b>							
Type 01			Plastic	Alpine White	116.044.11.1	116.045.11.1	116.044.11.1
			Metal	Brushed SS	115.630.FW.1	115.635.FW.1	115.084.FW.1
Type 70	Dual	Glass	White Glass	115.630.SI.1	115.635.SI.1	115.084.SI.1	
			Black Glass	115.630.SJ.1	115.635.SJ.1	115.084.SJ.1	
			Umber Glass	115.630.SQ.1	115.635.SQ.1	115.084.SQ.1	
Rectangle		Plastic	Polished Chrome	115.934.21.1	—	115.934.21.1	
<b>Surface Mounted Cover Plates for use with Flush Buttons</b>							
—			Glass	White Glass	115.766.SI.1*	115.082.SI.1*	
				Brushed SS	115.764.FW.1*	—	
			Metal	Customizable	115.766.00.1*	115.082.00.1*	
				Alpine White	115.768.11.1*	—	
				Polished Chrome	115.768.21.1*		
Plastic	Matte Chrome	115.768.46.1*	—				
	Customizable	115.698.00.1*		115.696.00.1*	115.087.00.1*		
—			Plastic	Customizable with frame	115.699.00.1*	115.697.00.1*	115.088.00.1*

\*Optional \*\*Recommended †Includes manual override

**Geberit**

2100 S. Clearwater Drive  
Des Plaines, IL 60018  
USA

P 800-566-2100  
F 847-849-1845

[www.geberit.us](http://www.geberit.us)

Geberit North America is part of the Geberit Group, a European market leader and global provider of sanitary technology. Located in Des Plaines, Illinois, Geberit North America provides concealed tank and carrier systems for wall-hung and floor-mounted toilets and fixtures. Geberit systems improve the look of any bathroom by hiding the unsightly toilet tank. Replacing a standard tank and toilet with the Geberit system results in more usable space, improved hygiene and better accessibility. The unique dual-flush valve saves water and is practically maintenance free. Geberit also offers cable-controlled bath waste and overflows in a variety of designer finishes. Critical working parts are outside the waterway, ensuring years of trouble-free operation.

For more information, contact your Geberit sales representative, call 800/566-2100 or go to [www.geberit.us](http://www.geberit.us)

