

GEBERIT SANITARY FLUSH UNITS

For Sigma Concealed Tanks, 2x6 Installations

SPECIFICATIONS

Electronic lifter and control for sanitary (interval) line flushing of Geberit Sigma12cm (2x6) concealed tanks. Units shall have wireless remote setting, operation and monitoring. All components shall be compliant with applicable codes and product standards.

FEATURES

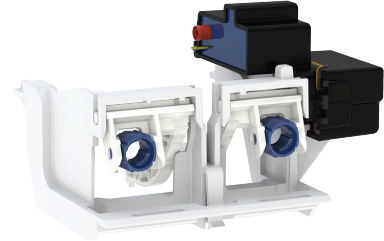
- Interval (hygiene) flush preset and adjustable to purge lines and prevent stagnation and contamination in plumbing dead legs or lightly used rooms or facilities. For example: hotel rooms, weekend homes.
- Retrofittable to existing Geberit Sigma12cm (2x6) concealed tanks without tearing down walls
- Can be combined with any single or dual-flush Geberit manual actuator plate Sigma01 to Sigma60 or cover plate
- Wireless remote setting, operation and monitoring via Geberit Connect smartphone app (via Bluetooth® enabled iOS or Android smartphones)
- Includes mounting frame and hardware

WARRANTY

- Electronic components: 2 years from installation

MAINS VERSION

116.109.00.6



BATTERY VERSION

116.110.00.6



Sanitary Flush Unit, Sigma 2x6 Installation

	Mains 12V	116.109.00.6
	Required Transformer with 12 VDC output for AC powered hands-free actuator (order separately)	115.861.00.6
	Optional accessory 1.8m cable power supply 12V (extension)	244.094.00.1
	Battery 3V	116.110.00.6

Can be combined with actuator plates Sigma01 to Sigma60 or Geberit cover plates. Refer to individual actuator spec sheets for more information.



Products marked with this symbol are compatible with the Geberit Control App. See note on the last page.

Products marked with comply with the American Disabilities Act (ADA) when installed per the requirements of the latest ADA Accessibility Guidelines (ADAAG) and/or ICC/ANSI A117.1.



ARCHITECT/ENGINEER APPROVAL

Job Name: _____

Date: _____ Quantity: _____

Model Specified: _____

Variations Specified: _____

Customer/Wholesaler: _____

Contractor: _____

Architect: _____



GEBERIT SANITARY FLUSH UNITS

For Sigma Concealed Tanks, 2x6 Installations

APPLICATION

- For preventing stagnation in drinking water pipes
- For preventing contamination
- For installation in Sigma concealed tanks 2x6 (12 cm)
- For use in new construction or to retrofit existing installations
- For releasing a single or dual flush via the actuator plate (sold separately)

TECHNICAL SPECIFICATIONS

- Automatic interval (hygiene) flush: every 72h after power up (factory setting)
- Interval flush range: 1-168 hours
- Interval flush time: 1-200 sec
- Interval flush time (factory): 5 sec
- Protection degree: IP45
- Mains AC
 - Nominal voltage: 85-240 V AC
 - Operating voltage: 12 V DC
- Battery
 - Operating voltage: 3 V DC
- Power consumption = < 4W
- Standby power consumption = 0.15 W
- For mains power, current draw is less than 1 amps. Recommended minimum wire size AWG 20 or as required by local code.

SCOPE OF SUPPLY

MAINS

- Support block with servomotor and lifting device, premounted
- Electrical control
- 120 V 60 Hz or 230 V 50 Hz providing 12 VDC transformer not included. Required accessory 115.861.00.6.

BATTERY

- Mounting frame with battery compartment, premounted
- Protection plate
- Support block with servomotor and lifting device, premounted
- Electrical control
- 2 alkaline manganese batteries LR20, each 1.5 V

Can be combined with actuator plates Sigma01 to Sigma60 or Geberit cover plates. Refer to individual actuator spec sheets for more information. (not included)

COMMUNICATION

- Device settings and operation with iOS or Android smart phones via integrated Bluetooth® interface
- Compatible with Geberit Control App
- Service agreement required to enable app features
- Operation is independent of app enablement, i.e. app signup not required

FEATURES

- Interval (hygiene) flush preset and adjustable to purge lines and prevent stagnation and contamination in plumbing dead legs or lightly used rooms or facilities. For example: hotel rooms, weekend homes.
- Retrofittable to existing Geberit Sigma12cm (2x6) concealed tanks without tearing down walls
- Can be combined with any single or dual-flush Geberit manual actuator plate Sigma01 to Sigma60 or cover plate
- Low noise servo motor actuates existing gravity flush valve. Motor auto-calibrates to adjust for installation tolerances
- Pre-installed electrical connectors with cross-polarity protection (one-way connection)
- Battery change can be performed without turning off water
- No mains power in tank, only low voltage

Geberit
2100 S. Clearwater Drive
Des Plaines, IL 60018
USA

P 847-803-7777
F 847-849-1845

www.geberit.us

