

# GEBERIT SYSTEM ACCESSORIES

## Optional Waste Fittings

### SPECIFICATIONS

Installation accessories for Geberit Duofix concealed carriers. Accessories shall be for alternate waste fitting installations, including cast iron elbows, back-to-back, and horizontal runs.

### FEATURES

Installation accessories for:

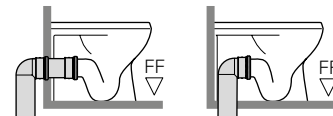
- Straight back
- Left hand or right hand runs
- Cast iron 90
- Back to back vertical or left hand/right hand runs

### WARRANTY

- One-year limited warranty against manufacturers' defect

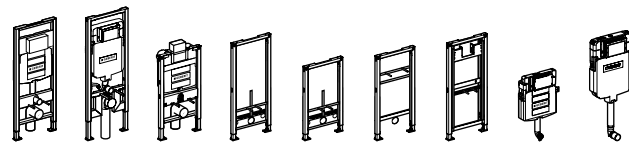
### Waste Fitting Discharge Configurations for Floor Mount Back Outlet Toilets

Note: Mounting collar/clamp by installer



**A.** Floor-Mount Rear Discharge into Wall

**B.** Floor-Mount Rear Discharge into Floor



Description	Model Number	111.335	111.798	111.012	111.520	111.524	111.490	111.625	109.304	109.797
		111.902	111.597	111.018					109.307	
	152.647.00.1								✓ (For A or B discharge. See above)	✓
	366.061.16.1								✓ (For A discharge. See above)	✓
	366.887.16.1	✓	✓	✓					✓ (For A discharge. See above)	✓
	366.913.16.1	✓	✓	✓					✓ (For A discharge. See above)	✓
	366.914.16.1	✓	✓	✓					✓ (For A discharge. See above)	✓
	367.072.18.1	✓	✓	✓					✓ (For A discharge. See above)	✓
	367.485.16.1	✓	✓	✓					✓ (For A or B discharge. See above)	✓
	367.923.16.1	✓	✓	✓					✓ (For A or B discharge. See above)	✓

Note: Any of these fittings in combination with Geberit installation systems are cUPC and IPC listed.

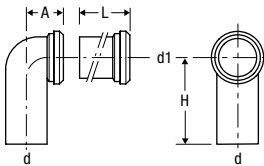
# GEBERIT SYSTEM ACCESSORIES

## Optional Waste Fittings

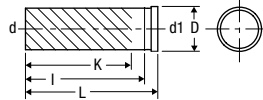
### DIMENSIONS

Model Number	Pipe Material	d	d1	A	D	H	K (Max. cut length)	L	a	I
152.647.00.1	PP	ø4" nom (110 mm)	ø4"± 3/16" (102 ± 5 mm)	3 1/2" (9 cm)	—	9" (23 cm)	—	13 3/4" (35 cm)	—	—
366.061.16.1	HDPE	ø3" nom. (90 mm)	ø3" nom. (90 mm)	4 3/8" (11 cm)	øv4 3/8" (11.2 cm)	8 7/8" (22.5 cm)	5 1/8" (13 cm)	—	—	—
366.887.16.1	HDPE	ø3" nom. (90 mm)	ø3" nom. (90 mm)	—	ø4 3/8" (11.2 cm)	—	9 7/16" (24 cm)	12 1/4" (31 cm)	—	10 7/8" (27.5 cm)
366.913.16.1	HDPE	ø3" nom. (90 mm)	ø3" nom. (90 mm)	3" (7.5 cm)	ø4 3/8" (11.2 cm)	4" (10 cm)	6" (15 cm)	11 3/8" (29 cm)	1 3/4" (4.5 cm)	—
366.914.16.1	HDPE	ø3" nom. (90 mm)	ø3" nom. (90 mm)	3" (7.5 cm)	ø4 3/8" (11.2 cm)	4" (10 cm)	6" (15 cm)	11 3/8" (29 cm)	1 3/4" (4.5 cm)	—
367.072.18.1	Cast Iron	3" nom. (84 mm)	3" nom. (90 mm)	4 3/8" (11 cm)	ø4 3/8" (11.2 cm)	5 7/8" (15 cm)	1 1/2" (3.5 cm)	—	—	—
367.923.16.1	HDPE	4" nom (110mm)	3" nom. (90 mm)	10 7/8" (27.5 cm)	ø4 3/8" (11.2 cm)	12 3/4" (32.5 cm)	7 1/2" (19 cm)	—	4 1/8" (10.5 cm)	—
367.485.16.1	HDPE	4" nom (110mm)	3" nom. (90 mm)	10 7/8" (27.5 cm)	ø4 3/8" (11.2 cm)	4" (10 cm)	4 3/4" (12 cm)	13 3/8" (34 cm)	4 1/8" (10.5 cm)	—

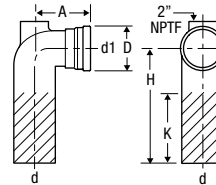
152.647.00.1



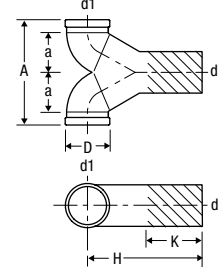
366.887.16.1



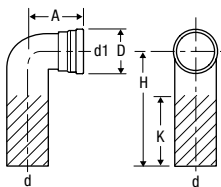
367.072.18.1



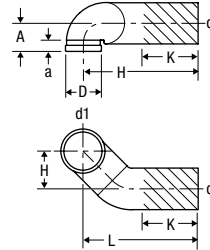
367.923.16.1



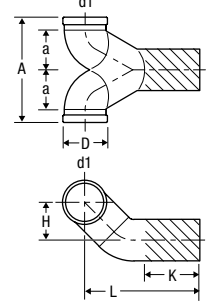
366.061.16.1



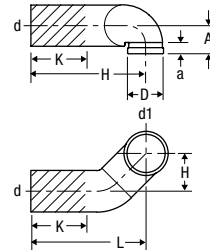
366.913.16.1



367.485.16.1



366.914.16.1



Geberit  
2100 S. Clearwater Drive  
Des Plaines, IL 60018  
USA

P 847-803-7777  
F 847-849-1845

www.geberit.us



<b>ARCHITECT/ENGINEER APPROVAL</b>		Variations Specified:
Job Name:		_____
Date:		_____
Quantity:		_____
Model Specified:		_____
Customer/Wholesaler:		_____
Contractor:		_____
Architect:		_____