

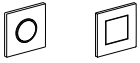
INSTALLATION SYSTEMS

Replacement Parts

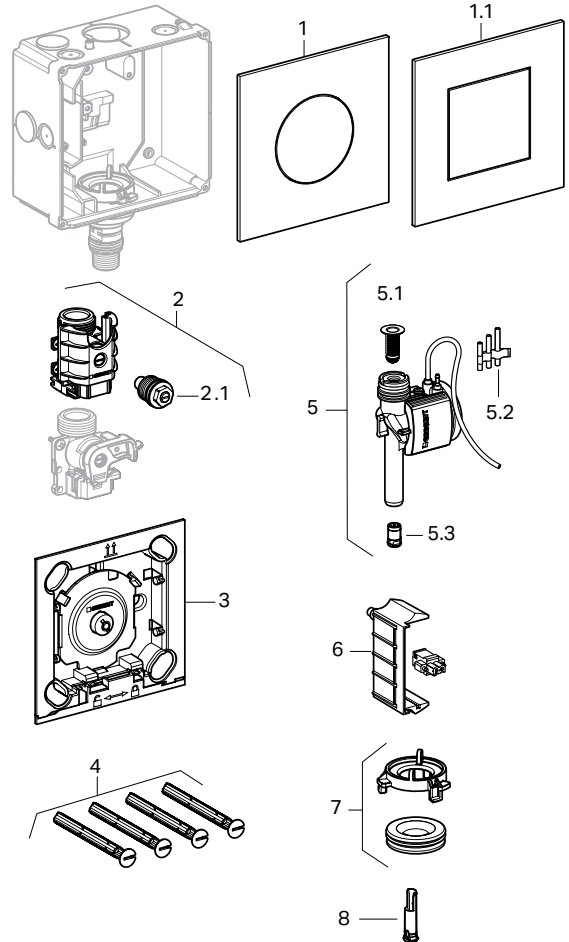
GeberitType 40 Manual Actuators


116.217 116.014

Actuator Dimensions: 4.92" x 4.92" (12.5 cm x 12.5 cm)



Item	Model No.	Description
1	246.118.FW.1	Actuator plate Type 40, Round, Brushed Stainless
1	246.118.14.1	Actuator plate Type 40, Round, Matte Black
1	246.118.JT.1	Actuator plate Type 40, Round, Matte White
1	246.118.QB.1	Actuator plate Type 40, Round, Brushed Red Gold
1	246.118.QD.1	Actuator plate Type 40, Round, Brushed Black Chrome
1	246.118.QF.1	Actuator plate Type 40, Round, Brushed Brass
1	246.118.ID.1	Actuator plate Type 40, Round, Brushed Nickel
1	246.118.SI.1	Actuator plate Type 40, Round, White Glass
1	246.118.SJ.1	Actuator plate Type 40, Round, Black Glass
1	246.118.JK.1	Actuator plate Type 40, Round, Lava Glass
1	246.118.JL.1	Actuator plate Type 40, Round, Grey Sand Glass
1.1	246.119.FW.1	Actuator plate Type 40, Square, Brushed Stainless
1.1	246.119.14.1	Actuator plate Type 40, Square, Matte Black
1.1	246.119.JT.1	Actuator plate Type 40, Square, Matte White
1.1	246.119.QB.1	Actuator plate Type 40, Square, Brushed Red Gold
1.1	246.119.QD.1	Actuator plate Type 40, Square, Brushed Black Chrome
1.1	246.119.QF.1	Actuator plate Type 40, Square, Brushed Brass
1.1	246.119.ID.1	Actuator plate Type 40, Square, Brushed Nickel
1.1	246.119.SI.1	Actuator plate Type 40, Square, White Glass
1.1	246.119.SJ.1	Actuator plate Type 40, Square, Black Glass
1.1	246.119.JK.1	Actuator plate Type 40, Square, Lava Glass
1.1	246.119.JL.1	Actuator plate Type 40, Square, Grey Sand Glass
2	241.934.00.1	Stop valve with throttle, complete
2.1	241.933.00.1	Regulating screw
3	246.159.00.1	Pneumatic actuator with mounting frame for Type 40
4	246.157.00.1	Distance bolts, set of 4 for Type 40
5	241.935.00.1	Pneumatic valve
5.1	241.932.00.1	Basket filter
5.2	241.936.00.1	Nozzle set, White
5.3	243.327.00.1	Flushing Volume Control 4 GPM (14 LPM)
6	241.947.00.1	Insulation protection with connection terminal
7	242.156.00.1	Lip seal flushing pipe
8	242.484.00.1	Flow limiter for UR-controls



Products marked with  comply with the American Disabilities Act (ADA) when installed per the requirements of the latest ADA Accessibility Guidelines (ADAAG) and/or ICC/ANSI A117.1.

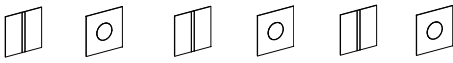
INSTALLATION SYSTEMS

Replacement Parts

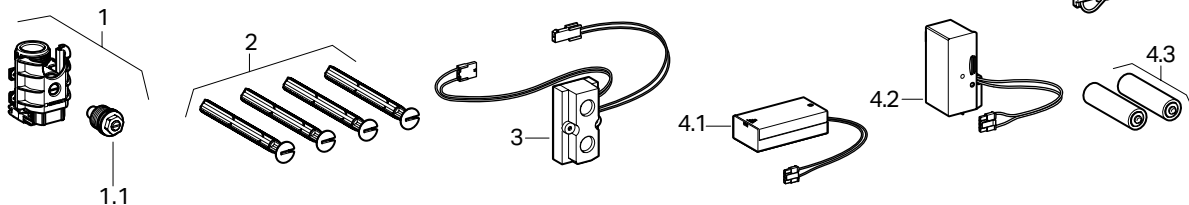
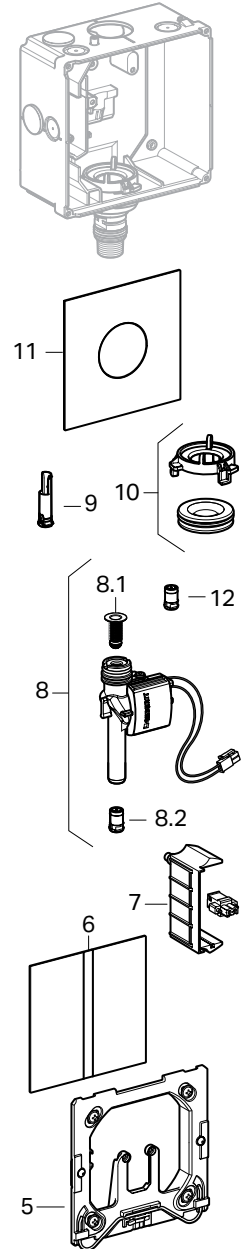
Geberit Type 40 Touchless Actuators


116.227 116.024 116.237 116.034 116.079 116.089

Actuator Dimensions: 4.92" x 4.92" (12.5 cm x 12.5 cm)



Item						Model No.	Description
1		1	1	1	1	241.934.00.1	Stop valve with throttle, complete`
1.1	1.1	1.1	1.1	1.1	1.1	241.933.00.1	Regulating screw
2	2	2	2	2	2	246.157.00.1	Distance bolts, set for UR type 40
3	3	3	3	3	3	241.941.00.1	Sensor electronics
		4.1	4.1		4.1	241.945.00.1	Battery housing for UR-control
4.2	4.2			4.2		241.944.00.1	Transformer for UR-control
		4.3	4.3		4.3	-	2x "AA" alkaline batteries
5	5	5	5	5	5	246.158.00.1	Mounting frame UR type 40 IR
6		6				246.121.FW.1	Actuator plate Type 40, Square, Brushed Stainless
6		6				246.121.14.1	Actuator plate Type 40, Square, Matte Black
6		6				246.121.JT.1	Actuator plate Type 40, Square, Matte White
6		6				246.121.QB.1	Actuator plate Type 40, Square, Brushed Red Gold
6		6				246.121.QD.1	Actuator plate Type 40, Square, Brushed Black Chrome
6		6				246.121.QF.1	Actuator plate Type 40, Square, Brushed Brass
6		6				246.121.ID.1	Actuator plate Type 40, Square, Brushed Nickel
6		6				246.121.SI.1	Actuator plate Type 40, Square, White Glass
6		6				246.121.SJ.1	Actuator plate Type 40, Square, Black Glass
6		6				246.121.JK.1	Actuator plate Type 40, Square, Lava Glass
6		6				246.121.JL.1	Actuator plate Type 40, Square, Grey Sand Glass
7	7	7	7	7	7	241.947.00.1	Insulation protection with connection terminal
8	8	8	8	8	8	241.946.00.1	Solenoid valve for UR-control
8.1	8.1	8.1	8.1	8.1	8.1	241.932.00.1	Basket filter
8.3	8.3	8.3	8.3	8.3	8.3	243.327.00.1	Flushing Volume Control 4 GPM (14 LPM)
9	9	9	9	9	9	242.484.00.1	Flow limiter for UR-controls
10	10	10	10	10	10	242.156.00.1	Lip seal flushing pipe
		11				246.120.FW.1	Actuator plate Type 40, Round, Brushed Stainless
		11				246.120.14.1	Actuator plate Type 40, Round, Matte Black
		11				246.120.JT.1	Actuator plate Type 40, Round, Matte White
		11				246.120.QB.1	Actuator plate Type 40, Round, Brushed Red Gold
		11				246.120.QD.1	Actuator plate Type 40, Round, Brushed Black Chrome
		11				246.120.QF.1	Actuator plate Type 40, Round, Brushed Brass
		11				246.120.ID.1	Actuator plate Type 40, Round, Brushed Nickel
		11				246.120.SI.1	Actuator plate Type 40, Round, White Glass
		11				246.120.SJ.1	Actuator plate Type 40, Round, Black Glass
		11				246.120.JK.1	Actuator plate Type 40, Round, Lava Glass
		11				246.120.JL.1	Actuator plate Type 40, Round, Grey Sand Glass
		12				243.579.00.1	Flushing Volume Control 2.4 GPM (4.5 LPM)



Products marked with  comply with the American Disabilities Act (ADA) when installed per the requirements of the latest ADA Accessibility Guidelines (ADAAG) and/or ICC/ANSI A117.1.